

Referral Guide

Prepared by
the Community Engagement Manager

Updated 01 May 2024



Edmund Rice
Camps



Hello there!

Welcome to Edmund Rice Camps for Kids WA.

Our Mission;

To respond to the needs of marginalised communities and individuals by delivering quality, mutually enriching programs that are managed and delivered by inspired, empowered people.



Edmund Rice
Camps



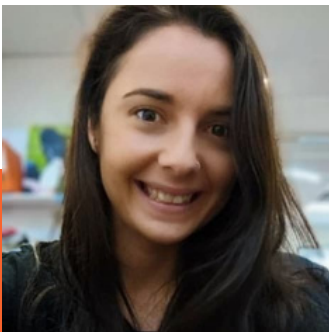
About Us

ERCKWA provides holiday camps and other associated activities for children aged 7–16 years, who are ‘at risk’ or vulnerable in some way.

ERCKWA also promotes the development of young adults who serve as volunteer camp leaders. Programs are run with a 1:1 ratio of participant to volunteer.

The organisation promotes the values and mission of the founder Edmund Rice; on whose principals the organisation is based.

Who We Are



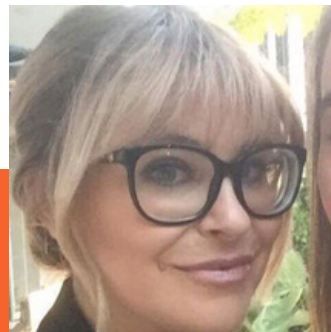
Mel Raich

Community
Engagement Manager



Meg Huitema

Chief Executive
Officer



Nicole Mancini

Philanthropy Manager



Dion Primerano

Volunteer Coordinator

YOUR CONTACT

Programs

The following programs are run for participants on referral;

Mega Camps

4 day programs run in January & July school holidays

Commonly held in Bindoon for 25 young people and 25 volunteers

Mini Camps

3 day program run during the year

Over a weekend for 15 young people and 15 volunteers

Christmas Party

All family members invited to an event at the ERCKWA office

Graduates Program

Program for past participants wishing to become a volunteer

Remote Programs

Remote Community Programs – supported by Telethon; volunteer leaders head to remote WA to run programs for young people without access to the city



Referrals

Step 1	Fill in the referral form
Step 2	Assessment made by staff
Step 3	If successful Referral agent pays the \$250 referral fee
Step 4	Read & sign other documents
Step 5	Children attend camp
Step 5	New referral required annually

Selection Criteria

- Must be of the age range 7–16 years
- Behaviour considered manageable by a young adult volunteer
- Able to attend camp alone without a carer
- Able to shower, toilet and feed without assistance

Policies & Guidelines

The following is a selection of policies adhered to at ERCKWA;

2-Leader Rule

Participants must always be with two or more volunteers

Safeguarding Policy

All volunteers are trained in safeguarding which may require reporting

Sickness

All members must be well to attend camps

Photography

All photos taken on ERCKWA devices; consent required

Bullying

ERCKWA has a strict zero tolerance policy for bullying

More Information



Mel Raich
Community Engagement Manager
Edmund Rice Camps for Kids WA
0499 145 055
ercwamce@edmundrice.org