



2026 Referral Guide

Updated 15 August 2025

thrive.org.au



Hello there!

Welcome to Thriive WA.

Our Mission;

To respond to the needs of marginalised communities and individuals by delivering quality, mutually enriching programs that are managed and delivered by inspired, empowered people.

This guide

This guide is a resource for referral agencies to use to refer children to Thriive WA programs. For more information visit our website or contact the Program Manager - Child Safeguarding.



About Us

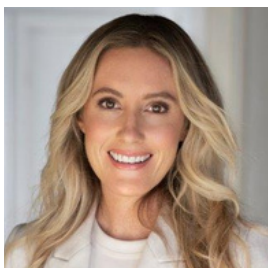
Thriive WA, formerly Edmund Rice Camps for Kids WA, provides life-changing respite programs for vulnerable and disadvantaged WA children aged 7-16 and their families - many of whom wouldn't otherwise have such opportunities.

Our programs are fun and engaging while also being developmentally-focussed and educational - most of all, we help kids feel seen and heard in a safe space!

Thriive WA also fosters the ongoing personal development of young adult volunteer leaders who act as friends and mentors to the children in our care.

Bringing the kids and young leaders together is powerful, creating a ripple effect for everyone involved, their loved ones and our wider community. Together, we Thriive!

Who We Are



**Meg
Huitema**
Chief
Executive
Officer



**Petula
Teaurima**
Program
Manager
Child Safeguarding



**Laura
Thorneloe**
Marketing &
Events Manager



**Dion
Primerano**
Program
Coordinator



**Carina
D'Agata**
Program
Officer

Programs

The following programs are provided by Thriive WA each year;

Mega Camps

- 4-day programs held during the January and July school holidays
- Typically hosted in Bindoon
- Designed for 25 young people and 25 volunteers

Mini Camps

- 3-day weekend programs offered throughout the year
- Cater to 15 young people and 15 volunteers

End of Year Party

- A festive celebration for participants and their families
- Held at Murdoch Telethon Community Cinema

Funfest (one day) Programs

- A single-day event for participants and their families
- Hosted at the Thriive office

Graduates Program

- A training initiative for former participants who wish to become volunteers
- Focuses on leadership, responsibility, and community engagement

Remote Programs

- Outreach programs delivered in remote WA communities
- Led by trained volunteers and supported by Telethon



Referrals

Step 1	Contact the Program Manager
Step 2	Fill in the Thriive Referral Form
Step 3	Pay the \$125 Referral Fee (For Programs JAN-JUN 2026)
Step 4	Referral Approved
Step 5	Read & sign other documents
Step 6	Children attend camp

Selection Criteria

- At the discretion of Thriive WA - children will be offered day or overnight programs in 2026.
- To attend Thriive camps, participants must:
 - Be aged between 7 and 16 years
 - Demonstrate behaviour that can be safely and effectively managed by a young adult volunteer
 - Be able to attend camp independently, without the support of a carer
 - Be capable of showering, toileting, and feeding themselves without assistance
 - Be able to actively participate in camp activities

Policies & Guidelines

To ensure a safe, respectful, and supportive environment for all participants, Thriive adheres to the following policies:

2-Leader Rule

Participants must be accompanied by at least two volunteers at all times. This ensures safety, accountability, and appropriate supervision.

Safeguarding Policy

All volunteers receive comprehensive safeguarding training. Any safeguarding concerns must be reported to the Program Manager – Child Safeguarding, the CEO, and a Board Member, in line with Thriive’s safeguarding procedures

Sickness

All participants and volunteers must be fit and well to attend camps. This helps maintain a healthy and safe environment for everyone.

Photography

All photographs must be taken using Thriive-approved devices.

Consent is required before capturing or using any images of participants.

Bullying

Thriive maintains a strict zero-tolerance policy on bullying.

More Information



Petula Teaurima
Program Manager – Child Safeguarding
Thriive WA
0499 145 055
program.manager@thriive.org.au