

Remote Community Program 2026 and beyond

www.thrive.org.au



Thriive WA

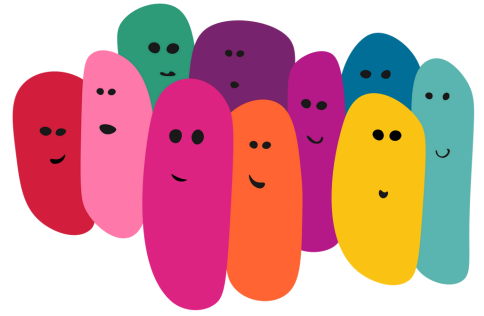
Thriive WA, formerly Edmund Rice Camps for Kids WA, provides life-changing respite programs for vulnerable WA children aged 7-16 and their families – many of whom wouldn't otherwise have such opportunities.

Thriive has been running fun and educational programs in remote communities since the inception of the Remote Community Program (RCP) in 2015. Since this time we have been to communities in Meekatharra, Yalgoo, Mount Magnet, Mullewa, Kalgoorlie, Coolgardie, Leonora, Collie, Waroona – and we currently run three programs per year in the East Pilbara; Nullagine, Jigalong and Marble Bar. This current program in the East Pilbara is proudly supported by Telethon.

Bringing the kids and young leaders together is powerful, creating a ripple effect for everyone involved, their loved ones and our wider community. Together, we Thriive!



The RCP



Remote Community Programs

- Volunteers attend communities in a travelling capacity running day time sessions
- Morning tea, Lunch, afternoon tea and dinner can be provided to kids as part of the program
- Volunteers spend 2-3 days in each community
- 6 sessions over a 10 day period in remote WA
- Run in consultation with the shire and community elders
- Programs are grassroots, educational and based on role modeling

Thrive Volunteer Leaders

- Young adult volunteers aged 16-25years
- All volunteers must complete the training provided
 - Trained in Child Protection and Safeguarding
 - Working with Children Clearance
 - Behaviour management training
 - Thrive core values and mission statement

Other programs run by Thrive WA

- Metropolitan camps 3-6 days
- Friends mentoring program
- Youth Leadership programs
- Fun Fest Family days

RCP Breakdown

- Programs run for children living in a remote community.
- Thriive WA plan to run 4 x 6-day programs in 2026 during the April and September school holiday periods for up to 25 children, aged 7–16 years, who are experiencing adversity.
- Children attend in a 1:1 ratio with young adult volunteer mentors.
- The camp ensures children participate in fun-filled games, crafts, sports, and other interactive activities, helping them build confidence, develop social skills, and enjoy a safe, engaging environment.
- Young adult volunteer mentors aged 16–25 years grow from a life-changing opportunity that influences their personal development, relationships, and future career choices.
- All children who attend these programs receive one-on-one attention, ensuring their individual needs are met, whilst enjoying nourishing home-cooked meals.



Example Itinerary

Program dates: April and October school holidays

Locations: Mid West, East Pilbara or South West

Manager: Dion Primerano - Remote Program Coordinator

Mid-West Region example

Day 1: Travel to Meekatharra

Day 2: Program 10am - 4:30pm

Day 3: Program 10am - 4:30pm

Day 4: Travel to Mount Magnet, Program 11am - 4pm

Day 5: Travel to Yalgoo, Program 1 - 4:30pm

Day 6: Program 10am - 4:30pm

Day 7: Travel to Mullewa, Program 1 - 4:30pm

Day 8: Program 10 - 1pm, Travel to Geraldton

Day 9 Youth Leadership Program 9am - 7pm

Day 10: Travel to Perth



Example Program

Each program is developed by our young adult volunteer leaders for maximum fun and entertainment ****

Typical Day on RCP

10am - Introduction, name games, camp rules

10:20am - Capture the Flag (a team sports game)

10:40am - Morning tea (fruit & healthy chocolate brownies)

11am - Hot Chocolate River (a team sports game)

11:15am - Sponge Relay, Egg and spoon race, water pistols

12pm - Lunch (Sausage sizzle and veg sticks)

12:30pm: Finger knitting, banner painting, nail art

1pm - Rotation stations: face painting, bean bag toss, paper mache

1:30pm - Water Activities (if there is a community pool)

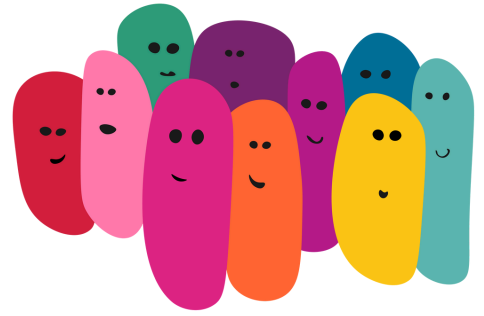
2:30pm - Afternoon tea (fruit, biscuits & popsicles)

3pm - Octopus (a team sports game) & basketball

4pm - Chocolate game and marshmallow tower



FAQs



How much does the program cost?

- The program is free for the kids and community to attend!
- Where possible the shire provides us with accomodation at the local community centre.

Does a representative of the shire need to be present?

- Yes, as per the agreement with the shire, a local community representative must be present at all times.

How far are you willing to travel?

- This program is for children all over WA!

Is this program sustainable?

- Thriive WA programs are about establishing connection and engagement within the community. We are keen to train young adults in the community to become volunteer leaders! Sometimes our new leaders will travel to Perth to attend metro programs to gain further experience.
- Thriive looks to establish multi-year relationships where the community comes to expect our visit.